

---

---

# Newsletter



NEW YORK STATE SOCIETY  
OF CLINICAL SOCIAL WORK  
PSYCHOTHERAPISTS, INC.

JULY, 1979 VOL. X, No. 1

---

---

## A Message from the President

ABBIE BLAIR, C.S.W.

First, I want to extend a cordial welcome and best wishes to Jacqueline L. Friend, the newly hired Editor of our Newsletter. Jacquie, a clinical social worker herself and with twelve years experience as editor of a professional newsletter, will start by producing three Newsletters to finish out this year. After that we hope to be able to have four regularly issued Newsletters per year. I will let her speak for herself as to plans for the Newsletter.

With the hiring of Jacquie our paid staff is increased to four. On January 1, 1979, Mitzi Mirkin became our Executive Secretary for 15 hours a week, increased to 30 hours in April 1979. Mitzi handles all of the clerical work around membership, including renewals. She deposits checks, takes letters, helps with brochures, get Minutes to Board members, answers inquiries by phone and will soon be involved in the large task of putting out our new Membership Directory.

Shortly after we hired Mitzi we also hired Seth Solomon as our accountant — an invaluable addition. He keeps our financial records straight, files our tax returns, and works with our Budget Committee.

In February, 1979, we hired Barry Mallin as our Albany advocate! In three short months Barry has been a whirlwind of activity. Details of his work appear

*continued on page 2*

## Report from Your Executive Board

### January

We discussed the tentative yearly budget; noted that we would have to pay more for the Clinical Social Work Journal, subscriptions which we give free as a benefit of membership; asked all committee heads to project their expenses for next year; decided all future budgets will be submitted by September of each year. Asked all chapter presidents to discuss proposed budget with their executive boards and be ready to vote next month.

Interviewed Barry Mallin, attorney as possible Albany lobbyist and advocate and voted to hire him for a three month period. We need a lobbyist to work on passage of legislation to include the mandatory clause in our current third party vendorship law, to work for the protection of the private practitioner.

Numerous incidents prove that agency-related individuals are being give preference by the N.Y. State Board for Social Work in granting approval for third party reimbursement. Also our Society should have input into those appointed to this Board. We also need someone to monitor the Albany scene with vigilance so that legislation harmful to the public and to us doesn't get enacted.

Confirmed Bert Kaplan of Nassau as First Vice President to succeed Sam Sterk of Staten Island who has resigned. Dr. Kaplan, who is head of the Department of Behavioral Sciences at Adelphi University will also function as chairman of the program and education committee.

Dr. Kaplan has developed a series of workshops for our May 19 General Membership meeting on the topic, "Developing Competence in Clinical Social Work."

### February

We voted to accept the 1979 budget. It was decided that the budget committee will be a standing committee of the Executive Board. Bob Addison, Treasurer, suggested we initiate a fund raising project at an early date to raise money to hire our lobbyist for additional hours. Several ideas were suggested but tabled.

Kathleen Friend, a member of the Board as President of the Metropolitan Chapter, announced she was withdrawing as Member-at-Large to allow enlargement of the Board. She also withdrew as chairman of our new Ethics Committee.

Marsha Wineburgh, chairman, submitted a written report of the PSRO committee.

Gemma Colangelo, chairman of the Membership Committee, reported there are 745 members, an increase of 250 members since October, 1977. There was much discussion of our need to help our members in the northern and western parts of the state develop chapters. Five people have been interviewed for the post of Newsletter editor. A choice is expected to be made prior to our next meeting.

There was much discussion concerning the duties of the Executive Secretary which have expanded greatly since Mitzi Mirkin was hired, January 1, 1978. It was decided the Executive Secretary is responsible to the President in all respects and it was asked that a job description be submitted by the Executive Secretary to the Board for its discussion and approval.

*continued on page 2*





EDITORIAL OFFICE:

Jacqueline L. Friend, C.S.W.  
262 Central Park West  
New York, N.Y. 10024  
Tel. (212) 873-0276

Issued 4 times a year  
February, June, October, December  
Send all communications to the above.

Professional advertisements only accepted  
Display ads - full page: \$100.  
½ page: \$50. / ¼ page: \$25.

NYS SOCIETY OFFICE:  
350 Fifth Avenue - Suite 3308  
New York, N.Y. 10001  
Tel. (212) 564-9166

## Editorial Corner

Jacqueline L. Friend

Assuming the duties of the Editor of the Newsletter of The State Society poses many challenges and many hopes of meeting them successfully. The Board and I hope to make the Newsletter truly reflective of the activities of the Chapters, the individual members and of course, the thrust of the State Society. In addition I plan to institute some new regular features. As you all well know not all that we plan can see light of day as soon as we would like. One feature which will start in the next issue is a Guest Column. Our first guest will be Konrad Fischer, President of the California Society of Clinical Social Work.

Another feature will be profiles of various committee chairpeople, and starting with this issue Marty Pollens will be profiled. We are hoping to have a vital "Letters To The Editor" column, for this issue we have only two letters but we hope they will evoke responses. Areas of clinical and professional concern will be covered, and reports of what is going on in clinical fields generally will be published.

As you know no Newsletter is worth anything without News to print. I need your help desperately in getting material to me. I am very much interested in any reports of meetings you have attended which would be of interest to the membership, any papers you present at professional meetings. Although this is a Newsletter and not a Journal very short clinical contributions would be appropriate and welcome.

Material must be sent to me typed, double spaced, and at least 4 weeks

## REPORT FROM YOUR EXECUTIVE BOARD (Continued from page 1)

### March

Phyllis Gordon, chairman of Alternate Funding, made several suggestions for raising money and there was much additional discussion. No consensus was reached.

Marty Pollens, chairman of Legislative Action, asked that someone attend the New York State Board of Social Work's open meeting on April 23rd where approval for third party reimbursement will be discussed. Kathleen Friend agreed that someone from her chapter would represent the Society. Barry Mallin has written a letter to the Legislature opposing a bill which would grant B.S.W.'s with ten years experience the Certification. It was announced that St. Vincent's Hospital, Staten Island, has requested the third party option for its employees.

Marsha Wineburgh will resign her PSRO post to become chairman of the Chapter Development Committee on April 15th. Initial emphasis will be on helping the Brooklyn chapter which has recently lost both its president and vice president.

Florence Dutko Grossman submitted a written report from her Diplomate committee. The report was approved by the Board.

### April

Gloria Aronson-Weinberg, new Chairperson of PSRO, was welcomed, as was Ruth Margolis, new President of our Brooklyn chapter.

President Abbie Blair reported that nominations for state office must be submitted to the members by June 15th. There will be vacancies for President, Second Vice President, Recording Secretary, Treasurer and two Members-at-Large.

Marsha Wineburgh reported on the N.Y. State Board of Social Work meeting April 23rd. Board members refused to discuss background and experience of Board members. They stated they had the right to determine what was and was not a "facility" or a "non-facility," and that they were not abiding by the ruling of the State Department of Mental Hygiene that a facility was one licensed by the State. The board refused to answer questions about the criteria used to accept or reject persons applying under the "non-facility" source. It was decided we must know much more about how this Board functions and what goes on at its meetings.

A motion was passed to extend Barry Mallin's service until the end of 1979. It is the belief of the President that Mr. Mallin has been diligent in monitoring pending legislation and has had a part in keeping 4 bills from getting out of committee.

Jacqueline Friend, a clinical social worker and editor of a Newsletter for 12 years, was selected as our new Newsletter editor. Mrs. Friend has been hired initially to put out three issues — June, October and December.

The Board and Mrs. Friend will then decide whether to continue together.

There is much feeling regarding the possible changing of requirements for admission to the Referral Service. Barbara Pichler, chairperson, finds that some people wish the requirements to remain the same (Fellow status). Others feel the requirements should be the "P" designation which the State awards to those approved for third party reimbursement. There will be a meeting of the Referral service chairpeople next month.

It was decided that in the future our membership dues bills will be more "bill-like" in appearance as several members complained that they did not realize they had been billed.

before publication dates. Our next issue is planned for the beginning of November, so it really is not too soon to think of sending in material. I am aware that the summer is a slack time, but some of you will be attending very important and interesting professional meetings and we would like to hear about them. Since 1979 is the International Year of The Child, we plan to include some special material related to Children in our December issue which will be a double issue, to finish out the year.

I look forward to working for and with you and reinforcing our field of Clinical Social Work.

### PRESIDENT'S MESSAGE

(continued from page 1)

elsewhere in this Newsletter. We don't know what we would have done without him, and are trying to have more of his time.

These four people free up your Executive Board to do its work for the Society and you, much more effectively. Some highlights of Board activity as reflected by our committees will give you an idea of our work. A report of Board actions month by month follows this Committee Report.



# State Society Spring Scientific and General Membership Meeting

Our State Education Committee is headed by Dr. Bert Kaplan, head of the Division of Behavioral Sciences of Adelphi University. It was he who developed the fine workshops at our May 19th General Membership meeting. He is already planning an excellent program for our fall General Membership meeting which will be held October 27th, so hold that date! Bert has represented New York State at a number of Federation education committee meetings where they are considering continuing education for clinical social workers.

Marsha Wineburgh of the Metropolitan chapter is our new chairperson of Chapter Development. This important committee has been established to encourage our members in the northern and western parts of the state to form chapters.

Phyllis Gordon of Westchester heads our Alternative Funding Committee. We must have more money than our dues bring, in order to expand the time Barry Mallin spends on our behalf.

Donna Rohlf from Metropolitan heads our new ethics committee. She and her people are working hard to set policy. This important committee has been long needed.

Gemma Colangelo of Queens is our Membership chairperson. She put on a statewide campaign in late 1977 to acquaint all social workers with our Society. Our membership trebled. You agreed with us that clinical social workers need their own society which will speak for them and fight for their issues. Gemma and her committee have been busy processing all persons seeking Diplomate status, a large number before the Bylaws were changed to restrict this status to those who have served the Society or the field with the utmost distinction.

Bob Addison, our Treasurer, has been hard at work with the budget committee and our accountant, not only to create a budget and an estimated budget, but to set up a new system to keep us accountable each month.

These are just a few of your hardworking Executive Board members who labor, for the most part anonymously, behind the scenes. Our Society is second in size only to the California State Society for Clinical Social Work and we are very fortunate to have these dedicated people doing so much for us and for clinical social work in New York State. I am proud to be working with them all.

*ABBIE BLAIR, C.S.W., President*

There were six workshops, which were quite well attended. We have brief reports from a few, the others will be described as they were in the printed program.

**WORKSHOP A: ADVANCED TRAINING PROGRAMS - Infantilizing or Growth Promoting** — Basic characteristics, philosophies and requirements of advanced training institutes were explored in regard to meeting clinicians' needs for knowledge and autonomous professional functioning. The question posed was whether training programs promote or hinder independent functioning.

The answer as to how much autonomy takes place in the clinician seemed to be related to the clinicians' attitudes toward themselves, their training and their work. In addition the philosophy and program of the training institute itself is an integral part of the process towards true professional autonomy. Specific demands made upon the student by programs were outlined, such as number of patient treatment hours required, supervision requirements, class time needed, and personal analysis. The relation of these differentials as the growth or infantilizing of the student was explored.

*BRYAN A. WILLIAMS, M.S.W., C.S.W.*

**WORKSHOP B: MYTHS AND REALITIES IN PEER AND GROUP SUPERVISION** — An excellent group of people participated freely and openly about their experiences with supervision. They talked about their "good" and "bad" experiences, and distilled out of this what they thought were the prerequisites for each of them in learning through Supervision. There were many who recalled their experiences as new students and the variety of supervision to which they were exposed; most of it not positive. Many found that their supervisors did not listen to their problems with the difficult cases assigned, and they were left floundering. Many workers set up their own peer supervisory groups, but since they had no experience with this method it was not very satisfactory. Most of the participants said they had had to seek supervision outside the agency, sometimes purchasing it from private sources. Another variant of supervisor that was difficult to handle was the "over" directive supervisor who laid out the step by step handling of the patient whether or not the student felt capable of carrying out the treatment in the supervisor's mode and therefore, the results were not effective. Other students had used their own therapy as a model for their work with clients which was also inappropriate.

It seemed obvious from this Workshop that the area of supervision still needs close examination and is an area of concern to clinical social work, and might be an area the State Society would like to go into further.

*SHIRLEY SCHECHTER, M.S.W., C.S.W.*

**WORKSHOP C: EVALUATING YOUR THERAPEUTIC POTENTIAL** — "An exploration of those aspects of Individual personal need which impede functioning at maximum therapeutic potential. Can countertransference issues be put aside?"

*CHAIRPERSON: MARTIN GREENE, D.S.W.*

**WORKSHOP D: EVALUATING READINESS FOR PRIVATE PRACTICE - What to Expect of Yourself** — This workshop began with a presentation on selection of criteria that can be employed in determining a practitioners' readiness for private practice, some of the differences between private and agency practice as well as advantages and disadvantages inherent in private practice. This was followed by a discussion with the workshop participants concerning their thoughts, feelings, and questions about the subject.

In selecting criteria to evaluate readiness, it is necessary to determine the goals, objectives, and processes of practice including being cognizant of who will be providing the service and the characteristics of clients who will be seen. While much of the criteria for evaluating readiness for effective practice is similar between private and agency practice, being, so to speak, on ones own carries with it a number of special areas of stress and difficulty. It is therefore particularly important to consider the individual therapists' ability to effectively function under these circumstances.

Areas of possible stress were noted along with their potential negative effect on the practitioner and client. These included the lack of support from a formal organizational structure such as a clinic or agency with its prescribed roles and sanctions for specific professional behavior, no built in available consultation, peer support, and auxiliary services for complex client situations, as well as the increased vulnerability to malpractice suits. Another area of stress includes feelings around job security which

*continued on page 5*



## Legislative Report

To: Martin Pollens  
Legislature Action  
Committee, SCSWP, Inc.

From: Barry K. Mallin  
Counsel, SCSWP, Inc.

Re: Albany Legislative Meetings

On Tuesday, May 8, I had meetings in Albany with the staff counsel for Senator Flynn and for Assemblymen Wertz and Siegel.

1. **Senator Flynn.** As you know, a number of our members who possess a combined total of more than three years facility and non-facility experience have been rejected by the State Board of Social Work for third-party reimbursement under Chapter 893/77. The Board has interpreted the statute to require either three years of facility or three years non-facility experience, but not a combination of both.

At our request, Sen. Flynn is introducing an amendment to Chapter 893/77 to permit the combining of facility and non-facility experience to meet the three year requirement.

Further, Senator Flynn's counsel informed me that at our request, the Senator will apply his persuasive powers on the New York State Civil Service Employees Union to pick up the third-party option. He will also talk to the State Board of Social Work as to why its regulations for qualification under Chapter 893, are more stringent for private practitioners than for agency personnel.

2. **Assemblyman Wertz.** Wertz had previously introduced a bill (A 4106) to set up a separate license under the Education Law for Clinical Social Work Psychotherapist. We supported this in principle, but had concerns over the length of the experience requirement and its conformity with Chapter 893/77. After meeting with Wertz and with his counsel, they have agreed to accept our recommendations and re-submit the bill incorporating our suggestions.

3. **Assemblyman Siegel.** As Chairman of the Assembly's Higher Education Committee, Siegel is an important legislator in the area of mental health licensing laws. His counsel, Peter Sunnenfeld assured me that Siegel and other members of the Committee are aware of the problems presented by the efforts of the New York State Psychological Ass'n and other similar groups to gain control over other mental health professionals. Our lobbying efforts are proving successful by alerting Siegel and others on the Higher Education

Committee to the controversial nature of these bills and to the potential danger of permitting one special interest group (i.e. psychologist) to pre-empt and monopolize the mental health field.

According to Sunnenfeld, there is little likelihood that any of the bills sponsored by NYSPA will be reported out of committee. This includes A 3240, which would have given broad powers to the psychologist over the mental health field, and A 3167, which might have put institutes specializing in psychotherapy teaching out of business. Further, A 2947, which would have required a doctorate to practice psychotherapy has been withdrawn by the sponsors.

Sunnenfeld assured me that the Higher Education Committee will take a long, hard look at the current licensing provisions before it supports any changes in the law and will listen to what other groups have to say. All in all, the clear import of Sunnenfeld's remarks to me is that his committee is moving with extreme caution in this area, and this bodes well for the Society's position.

---

*Philip R. Johnston*  
Executive Secretary  
State Board of Social Work  
99 Washington Avenue  
Albany, New York 12230

Dear Mr. Johnston,

Thank you for your letter of April 17, 1979 relating to 8 NYCRR 74.1 (c) (iii) which requires the submission of three case histories for non-facility qualification under Chapter 893/77.

On behalf of the Society of Clinical Social Work Psychotherapists, Inc., I wish to raise several points concerning your letter and to request additional material relating to this regulation.

1. Contrary to your statement regarding opposition to the regulation, SCSWP, Inc. did indeed voice objection to this regulation when originally proposed. Attached hereto is a copy of a letter dated December 18, 1977 from Martin Pollens to you, in which he raised objection to this particular regulation, recommended an alternative method and, further, made mention of a telephone conversation the previous week between yourself and Mr. Pollens. Mr. Pollens never received any response to his letter.

Does the statement in your current letter indicate then that the objection raised by the Society was never presented to the State Board of Social Work or the Board of Regents when the regulation was being considered by them?

2. Your statement that Chapter 893 makes a differentiation between agency and private practice on the basis of the types of supervisors required in private practice raises a serious question. Does this mean that in agency practice, supervision can be given by persons other than a psychiatrist, a certified psychologist or a social worker qualified for reimbursement – and, if so, what are the qualifications for agency supervisors.

3. Your statement relating to the so-called intent of the law goes beyond the perimeters of the statute. Agencies are subject to the same financial and success-oriented pressures that are found in private practice. Agencies stand to lose financially if their staff members are not approved for reimbursement. A supervisor in an agency can be just as anxious to please his administrator by establishing a good record for his "Trainees".

This distinction in the regulation has no rational basis in fact. It implies that a psychiatrist, a certified psychologist or a social worker in private practice is more likely than agency personnel to jeopardize his or her own professional license by sponsoring an unqualified applicant.

To enable me to understand the history of how the current regulation was adopted, would you kindly send to me copies of the items specified in Section 201 and 202 of the State Administrative Procedure Act relating to the adoption of administrative rules. I am referring specifically to copies of notices published in the state bulletin relating to regulations under Chapter 893/77 and the dates thereof; whether the notices were published in any newspapers of general circulation or in any professional publications and dates thereof; the date in which the regulation was adopted by your Board and by the Board of Regents and a copy of the minutes of the meeting in which it was adopted; and when the regulations as finally adopted were published in the state register and state bulletin.

Further, would you kindly send to me a copy of your Board's procedure for the submission of petitions for declaratory rulings pursuant to the requirements of Section 204 of the State Administrative Procedure Act. A number of our members have asked how they can appeal the denial of their applications.

4. Please be officially advised that the Society of Clinical Social Work Psychotherapists, Inc. wishes to place the names of Abbie Blair and Martin Pollens in nomination for the 1980 New York



City opening on the State Board of Social Work. Please send me any required application forms.

I look forward to your early reply to the matters raised in this letter and thank you for your continuing assistance in enabling us to better understand the workings of the State Board of Social Work.

Sincerely yours,  
BARRY K. MALLIN

---

## LETTERS TO THE EDITOR

---

I have been very much interested in becoming active in the State Society as well as my local chapter. I am most admiring of the valiant and important legislative efforts the Society has made. I have enjoyed the Scientific meetings, but I want more professional stimulation, and opportunities to exchange views. Are there any existing study groups within the Society in any of the New York boroughs?

If they exist I would like to hear about them through this column; if not, are any people as interested as I in organizing some?

A New Member

### TO THE EDITOR:

I would like to open up for discussion an issue that has increasingly been of interest and concern to me. Designation of those social workers who are qualified for independent practice, and certified as such, has been the province of one professional organization.

Has not the time come for us as a Society of Clinical Social Workers to set up an appropriate mechanism to do the same in the specialty of clinical social work psychotherapy? I know this is a very complex issue with many important professional ramifications. Perhaps this is beyond the province of a State Society and should be finally decided upon by the Federation of Clinical Social Workers. In any event, discussion could be initiated and ideas formulated by our state Society. It is possible that others could then pick up the ideas for their thinking and a presentation could then be made for consideration by Federation.

I would be interested in using the Newsletter as a vehicle for opening up discussion on this important topic.

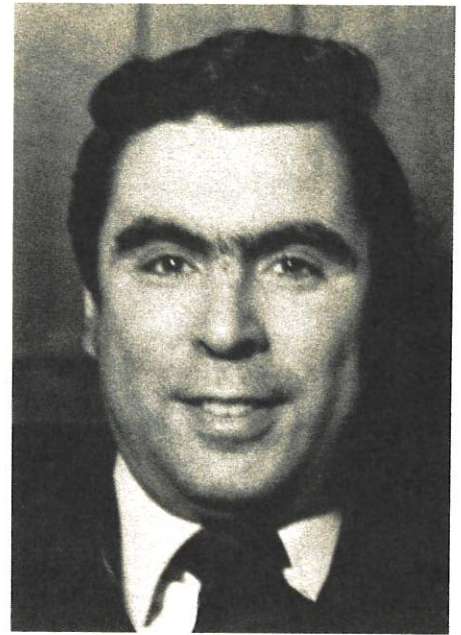
A Concerned Member

## PROFILE OF MARTY POLLENS

Marty Pollens — a diplomate in the State Society joined in 1970 — President Florence Radin appointed me as a member of the Social Action Committee. At that time the SCSWP was primarily a small organization composed of mostly New York City practitioners. There was a beginning realization that in order to be more representative as a STATE group, we needed to encourage membership in upstate areas. Vital to our legislative efforts we needed to reach more non-New York City, upstate legislators for their support. If we had local Chapters whose members were actual constituents, they could do the grass roots cultivation of the State legislature. Later as chapter development chairman under 3 administrations, I directly encouraged and supported the development of Buffalo, Nassau, Suffolk, Mid-Hudson, Staten Island, Met, Queens, Rockland, and my own home chapter, Westchester. I saw the Society, grow from 200 to nearly 650 members with growing status and prestige within the social work field and among the agencies in Albany.

I served as first president of the Westchester-Rockland Chapter for 3 years — saw it develop from 20 members to over 100 members, becoming the largest chapter outside of the Metropolitan Chapter. Also served as vice president of the State Society, 1973-75.

In my capacity as Chapter Development Chairman, I worked very closely with Beverly Unger, who was Social Action chairwoman. When Beverly left the



New York area for retirement in Canada, Nancy Palazollo, then President, prevailed on me to become Legislative-Legal Chairman. I have been functioning in this capacity for nearly two years.

In January 1978 at the Society's Installation luncheon I was presented with the Society's first Distinguished Service Award for Chapter Development and Legislative Committee work.

I am currently directing and formulating Legislative-Legal committee efforts supervising the work of our advocate in Albany, Barry Mallin.

I am currently faculty and supervisor, Metropolitan Center for Mental Health; Long Island Institute for Mental Health.

---

## STATE SOCIETY SPRING MEETING (continued from page 3)

can stimulate countertransference reactions, overvaluing clients and a possible superficiality out of fear of alienating and losing clients especially if the practitioner has no other source of income.

In private practice the therapist functions in a more autonomous role. There are questions then regarding accountability to the client consumer, to the profession of Social Work, and possibly some day to the various insuring organizations. Also, if formal evaluations are used, it will be necessary to decide who will measure the criteria and what techniques of measurement will be used.

OSCAR G. KORTE, D.S.W.

**WORKSHOP E: PERSPECTIVES ON SUPERVISION** — "A review of current supervisory procedures and outcomes as compared to the professional needs of the clinician. Does current supervisory practice reflect the needs of the developing clinician?"

CHAIRPERSON: RICHARD MINGOIA, M.S.W., C.S.W.

**WORKSHOP F: PUTTING IT TOGETHER - Eclecticism Or Integration?** — "Eclecticism or Integration?" led to discussions of varying theories and techniques. Theories of human behavior; theories of practice; theories which incorporate many theories all held sway. The leader's position tended to emphasize the clinician's value system and sense of definitions (as to effectiveness, as to health, as to what constitutes the good clinical practice.) "Know thyself," was merely a starting point. "Stand for yourself," was a necessary middle (growing) point.

IRVING R. WEISBERG, Ph.D., C.S.W.



## OUR RECENTLY ACCEPTED MEMBERS

*NOTE: From time to time we will list new members in the Newsletter. This listing, however, represents a backlog from January through May 1979. Some of you are already very actively involved members and we invite all of you to do the same.*

Valerie Tate Angel, *Metropolitan*  
Carole Argentieri, *Westchester*  
Barbara J. Balaban, *Nassau*  
Monica R. Bernheim, *Metropolitan*  
Rita Bigel, *Nassau*  
Karen Boorshtein, *Nassau*  
Roslyn N. Black, *Westchester*  
Esther Braun, *Metropolitan*  
Hal Brickman, *Brooklyn*  
Cynthia M. Chase, *Metropolitan*  
Mildred R. Cheskin, *Westchester*  
Lynda M. Cohen, *Brooklyn*  
Richard M. Cohen, *Metropolitan*  
Rhoda Laurie Cohen, *Nassau*  
Edward Conde, *Nassau*  
Shirley J. Cooper, *Nassau*  
Louise Darrow, *Suffolk*  
Harriet N. Diamond, *Metropolitan*  
Adele Elkind, *Metropolitan*  
Laurie Klein Evans, *Nassau*  
Joann R. Fallon, *Suffolk*  
Sharon Klayman Farber, *Westchester*  
Marjorie S. Fink, *Westchester*  
Joseph W. Flanagan, *Metropolitan*  
Laura Flanagan, *Metropolitan*  
Adrienne Fogler, *Metropolitan*  
Raymond Fox, *Nassau*  
Edith Ganz, *Westchester*  
Kathleen Miele Georgeson, *Metropolitan*  
Rita Gerson, *Metropolitan*  
Victor Goldman, *Suffolk*  
Eileen Goldstein, *Metropolitan*  
Maxine A. Green, *Metropolitan*  
Denis Guttsman, *Staten Island*  
Paula L. Hazelton, *Metropolitan*  
Sonia Hieger, *Nassau*  
Harriet Irom, *Nassau*  
Bernard Isaacson, *Metropolitan*  
Leah Kaplan, *Nassau*  
Maxine Hoffman Karelitz, *Brooklyn*  
Monty Kary, *Rockland*

Judith R. Kaufman, *Metropolitan*  
Sandra S. Kavner, *Westchester*  
Grace Donohue Kerr, *Dutchess County*  
Judith Klein, *Metropolitan*  
John Laughlin, *Nassau*  
Dorothy O. Leicht, *Westchester*  
Evelyn Lerner, *Nassau*  
Annette R. Lieberman, *Metropolitan*  
Alice Lind, *Westchester*  
Susan Mande, *Metropolitan*  
Gregory Mavrides, *Suffolk*  
Dolores McCarthy, *Metropolitan*  
Margaret McConnell, *Nassau*  
Josephine Miller, *Suffolk*  
Arlene P. Moskowitz, *Metropolitan*  
Joan Beverly Murray, *Metropolitan*  
Elizabeth Neuwirth, *Metropolitan*  
Eugene Allen Padow, *Metropolitan*  
Nicholas John Pappas, *Metropolitan*  
Miriam Pierce, *Metropolitan*  
Miriam Pinzer, *Metropolitan*  
Lynn P. Rashbaum, *Metropolitan*  
Joan Reahl, *Nassau*  
Harvey Rosensfit, *Brooklyn*  
Dale W. Ryan, *Metropolitan*  
Dianne Sawyer, *Nassau*  
Linda Schnapp, *Westchester*  
Barbara M. Seifert, *Suffolk*  
Kathleen Shanley, *Nassau*  
Marvin Sicherman, *Westchester*  
Judith Simons, *Metropolitan*  
Barbara J. Socor, *Nassau*  
Charles Sternberg, *Rockland*  
Joanna B. Strauss, *Westchester*  
John E. Swanson, *Brooklyn*  
Sylvia Teitelbaum, *Metropolitan*  
Leah Tolpin, *Nassau*  
David J. Truslow, *Metropolitan*  
Natalie S. Wayne, *Metropolitan*  
Anthony Zuccaro, *Westchester*

## MEMBERSHIP REPORT

We have just about tied up all the loose ends of a very extended Renewal Season! Now we face the formidable task of compiling the new Membership Directory. If any of you have not yet returned your forms indicating the way you wish to be listed in the directory, please take care of it now, as you read this. It is the only way we have of keeping up to date on any recent moves or changes of phone number of which we have not been previously informed. Again, you may be listed at only one address — either office or home — and may list your home phone number and one office number. Information should go im-

mediately to: Mitzi Mirkin, Exec. Sec'y  
513 Benine Road  
Westbury, N.Y. 11590

We have decided to be a little more aggressive in recruiting new members from the Schools of Social Work next season. This will include the distribution of membership packets to the students.

Finally, I would like to give special thanks to Marguerite Perrin Klein, who so capably took over for me during my recent hospital stay and helped to keep the membership wheels rolling, and, of course, to Mitzi, whose devotion to the Society and attention to membership matters goes without saying.

Gemma F. Colangelo  
Membership Chairperson

## Chapter News and Notes

### METROPOLITAN CHAPTER

Our April Scientific Meeting was not only a huge success but was the first time non-social workers were invited as presenters. The other professionals represented a wide range of orientations and allowed for our being exposed to a diversity of views that made for a stimulating day of meetings.

The Metropolitan Chapter is the largest in the Society and perhaps just because of that it has taken a great deal of time and thought to formulate our thinking as to how to involve our members. Monthly Chapter-wide meetings were neither feasible nor seemed to meet the interests of our membership. The Executive Board of Metropolitan Chapter meets monthly and any interested chapter member is welcome to attend — just call the President Kathleen London Friend at 722-1950 to make appropriate arrangements.

The Chapter has just completed the election of new officers to fill existing vacancies. The newly elected Board members are:

BARBARA PICHLER, Vice President  
THOMAS RUGGIERO, Treasurer  
SUSAN FINKELSTEIN,  
Member-at-Large  
MARGUERITE PERRIN KLEIN,  
Member-at-Large

*Our thanks go to Janet Parks, Chairperson and her Election Committee, and to all the candidates who ran, and our appreciation must also go to the outgoing Board Members.*

We function through committees and additional members are always welcome! If you are interested in committee involvement, please call Kathleen London Friend. Our Social Action Committee is of particular importance to the entire State Society as many State meetings and legislative hearings are held in New York City. When State Society representation is necessary we at Metropolitan are called upon to provide a person to attend. If interested in serving on the Social Action Committee, please call the Chairperson: Susan Finkelstein, (212) 966-4344.

A brief communique from Alan Shanel Chairperson of the Metropolitan Chapter Center for Continuing Professional Education follows.

KATHLEEN LONDON FRIEND, C.S.W.  
President



## Metropolitan Chapter Center for Continuing Professional Education

Our last clinical conference "The Process of Change in Psychotherapy", was a great success. An evaluation questionnaire distributed to the participants indicated that the majority found the subject of the conference and discussants' participation noted excellent. The high level of the contributions was all indicated that they learned a great deal and, requested further clinical conferences. Our committee is presently working on formulating another clinical conference next year, with the possibility of a well known keynote speaker. Over the summer all Metropolitan members will be receiving a questionnaire indicating his/her preference for further conferences. You will get this questionnaire along with the new election results. Please mail these back to Fredlee Kaplan, C.S.W. This will help us determine where your interests lie.

ALAN L. SHANEL, C.S.W.,  
Chairperson

### NASSAU CHAPTER

Our programming this season has been a successful blending of open-to-the-public workshops and more intimate meetings for members only. We have also tried to achieve a balance of offerings, some to appeal to the newer people in the field and others to please and challenge our more experienced members.

On March 25, Monica Rawn presented a scholarly evening of Heinz Kohut. This work, a reading list, distributed well before the meeting date, as well as suggested questions for discussion, made this a real learning experience, as the give and take between Mrs. Rawn and her audience contributed to the success of this format.

Four well attended and well received workshops followed. On April 7, Dr. Theodore Saretsky talked about "New Perspectives on Transference and Countertransference," discussing the clinical aspects of countertransference as well as the need of the therapist to use his own "gut" feeling in relating to the patient.

On May 5, three member-led workshops took place at North Shore Hospital. Arthur Lane presented a provocative talk on "Treatment of Patients You Like and Dislike." He enumerated how various personal and other factors may influence the therapist's treatment ... Bert Kaplan's topic was "Impact of the

Therapeutic Posture on Therapeutic Progress." Dr. Kaplan gave us an in-depth report on the development of psychoanalytic theory from Freud to Jacobson, Hartman and Mahler. He discussed a case indicating the various options open to the therapist and the pitfalls he or she might encounter ... Dorothy Marck has studied for 4 years at the Bowen Workshops at the Medical College of Virginia. She discussed Bowen's Theory of going back to the patterns of past generations of family relationships, and how this affects the present family interaction.

On May 18, at a closed meeting, Marty Greene explored Robert Langs' Theories. There was an abundance of interest and much discussion as Dr. Greene explained the "Frame," the Adaptive Context, Type I and Type II Derivatives and the use of the client's communication as a commentary on the therapeutic relationship and as a "mirror" of the therapist's countertransference.

Lest you think that all work and no play makes Nassau a dull Chapter, squelch that thought right now! By the time this reaches you, we shall have enjoyed a June party in the elegant setting of the home of Marcia Zigelbaum. The view of the New York skyline across the Sound, the socializing and the delectable food will be but happy memories.

We are due for an election and a subsequent change of officers. We will present our new officers to you in the next Newsletter. We are also planning to raise our glasses to old order and new at a September Inaugural Party at the home of Selma and Arthur Lane.

MITZI MIRKIN

### ROCKLAND CHAPTER

Elections were held and the new officers are:

Vice-President: LOISCAREY

Recording Secretary:

ELIZABETH SWAIN

Corresponding Sec'y:

CHARLES KNOTT

Membership Chairperson:

EDITH TEILHABER

Although the Rockland Chapter is relatively small, we have regular monthly meetings during the year. These are held on the first Friday of the month, at member's homes. It was clear to the chapter that they had much better attendance at meetings when they were held in homes rather than institutional settings. Prospective new members are invited to attend and participate in dis-

cussions. One recent meeting topic was: "Resistance as encountered by therapists with Clients". Local newspapers are used to publicize meetings and the existence of the Chapter and all these devices have helped attract new members and make the meetings successful.

PAUL HEBER, Former President

### WESTCHESTER CHAPTER

As we reflect back on our activities for the 1978-79 year, we experience a sense of achievement for our successful programs and our increased membership. Our future plans are first, to enjoy the summer, and then, to come back in the fall with a calendar of events which will include educational, legislative and social functions. Our next program, which we are all excited about is the All-Day Institute with Gertrude and Rubin Blanck on September 15, 1979. For further details of this program, see announcement elsewhere in this Newsletter.

PHYLLIS GORDON, President

Westchester Chapter  
NEW YORK STATE SOCIETY  
CLINICAL SOCIAL WORK  
PSYCHOTHERAPISTS, INC.  
**Annual Fall  
All-Day Professional Meeting**  
RUBIN BLANCK, MS., CSW  
GERTRUDE BLANCK, Ph.D., CSW  
*A Developmental Overview  
of Narcissistic  
and Borderline Problems and  
the Implications for Technique*  
DATE - Saturday, September 15, 1979  
PLACE - New Rochelle Hospital  
New Rochelle, New York

### QUEENS CHAPTER

The Queens Chapter is announcing its Fall Educational Program to take place on Saturday, **October 20, 1979** from 9:30 am to 4: pm, at the Queens Children's Psychiatric Center, in Belle-rose. The speaker will be Dr. William Kirman, Chairman of the Department of Counselling and Guidance at LIU, faculty member of the Center for Modern Psychoanalytic Studies, and a practicing psychoanalyst. He is also author of the book, "Modern Psychoanalysis in the Schools." He will speak on "The

(see over)



Aggressive Child in Education and in Therapy." Workshops will follow. The program is geared to attract the educational and therapeutic community.

The Queens Chapter is also planning elections for officers to begin their terms in September, 1979. My thanks to those officials who served the chapter for the past two years; and worked with me.

ROBERT GALARDI, C.S.W.,  
President

---

#### ADVERTISEMENTS

---

#### OFFICE SPACE AVAILABLE West 72nd Street Office Space

Two modern spacious private offices with common waiting room available for hourly or other flexible arrangement. Good security. Atmosphere of private practice. If interested call Jeffrey Soffer, C.S.W. 288-4296

---

#### SPACIOUS OFFICE In Park Slope - Brooklyn

Available Tuesdays, Wednesdays, Fridays and Saturdays. Share waiting room and playroom — office large enough for groups. Monthly basis only. If interested please call:  
Marguerite Klein C.S.W. 961-4018

---

#### New York State Society of Clinical Social Work Psychotherapists, Inc.

Editorial Office  
262 Central Park West  
New York, N.Y. 10024

### SAVE THE DATE

#### New York State Society of Clinical Social Work Psychotherapists, Inc.

OCTOBER 27th, SATURDAY  
SPECIAL LUNCHEON AND AFTERNOON MEETING  
Noon to 6 P.M.

#### AWARDS LUNCHEON FOR STATE LEGISLATORS — RESPONSE FROM THEM

Afternoon Sessions will include as participants:

ABBIE BLAIR, C.S.W., President N.Y. State Society  
of Clinical Social Work Psychotherapists

NANCY PALAZZOLO, President of Federation of Clinical Social Work

KONRAD FISCHER, President California Society of Clinical Social Work

CREIGHTON ROWE, National Registry

MARTIN POLLENS, Legislative Chairperson, NYS SCSWP

ROBERT ADDISON, Treasurer NYS SCSWP

Focus Will Be On Intensifying Momentum Toward the 'Mandatory' Clause

Representatives from Virginia will also appear to  
discuss the need for continued vigilance after Legislation.

#### NEW YORK STATE SOCIETY WINS IMPORTANT POINT

Through the intervention and negotiation of the Legislative Chairperson and our advocate there has been a clarification of the State Board of Social Work interpretation of the regulation relating to experience in a post-graduate Institute. The regulation is now being applied as follows:

Time spent in a student capacity at a Post-Graduate Psychotherapy Institute

appropriately licensed or incorporated, may be counted as agency experience, provided that there was a minimum of 20 hours of direct practice in a structured clinic operated by the Institute.

Experience in other Institutes not having such a structured clinic can be considered under the non-facility provisions of the law.

BULK RATE  
U.S. POSTAGE  
PAID  
New York, N.Y.  
Permit No. 9841

Ms. Barbara Pichler  
603 W. 111th Street  
New York, N. Y. 10025

DATED MATERIAL